

“ ”

1982

20

1983 2

“ ”

1992

“ ”



10
2019
99631.5 1.1% 5.8%
10.3% 13.7%

2013 3 8

“

”

2014 12 13 14

“

”







“

” “

” “

” “

”

“

”

—



“ ”

“

”

“

”

“

”

“

”

“

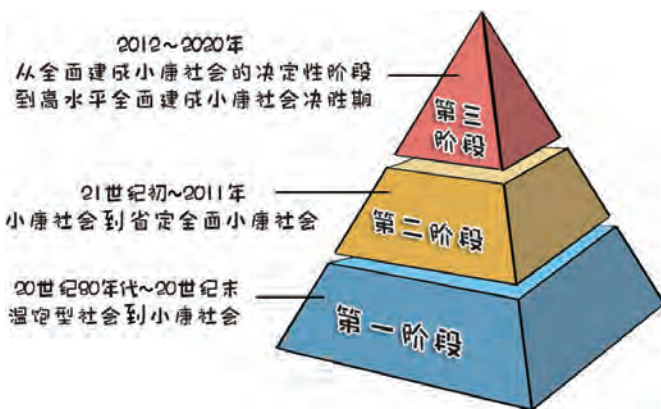
”

“

”

“

”



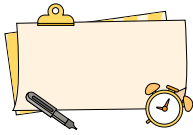
20 80 ~20

1983

“ — — ”

“ ”

20 90



1983 2 5

2 6

“ 2000 ”

1977-1982 6

20

“

”

1978

65.59

31.9

1982

104.88

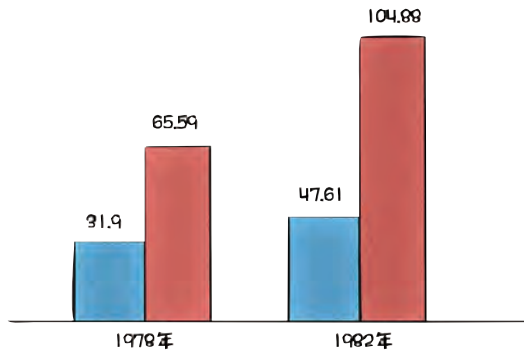
47.61

800

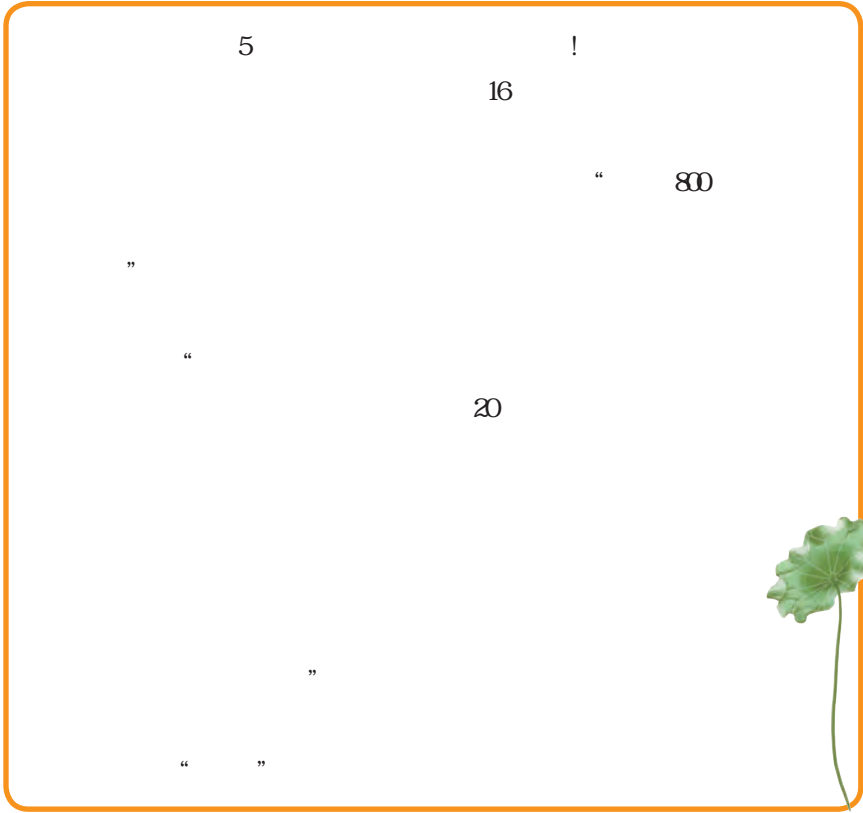
15

1985

■ 国民生产总值 (亿元) ■ 工农业总产值 (亿元)



1978 1982



“ ”

21

2011

2003

18

25

2010

3

2012~2020

“ ”

2013

18 25

22 36

2014

2017 11

2018

2019 7

5

2018

109.52

11

100 18

100

33

A+A+A+

14

2020

“ ”

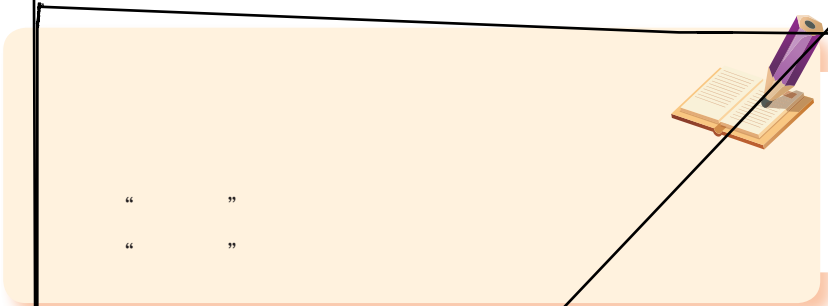
“ ”

“ ”

“ ”

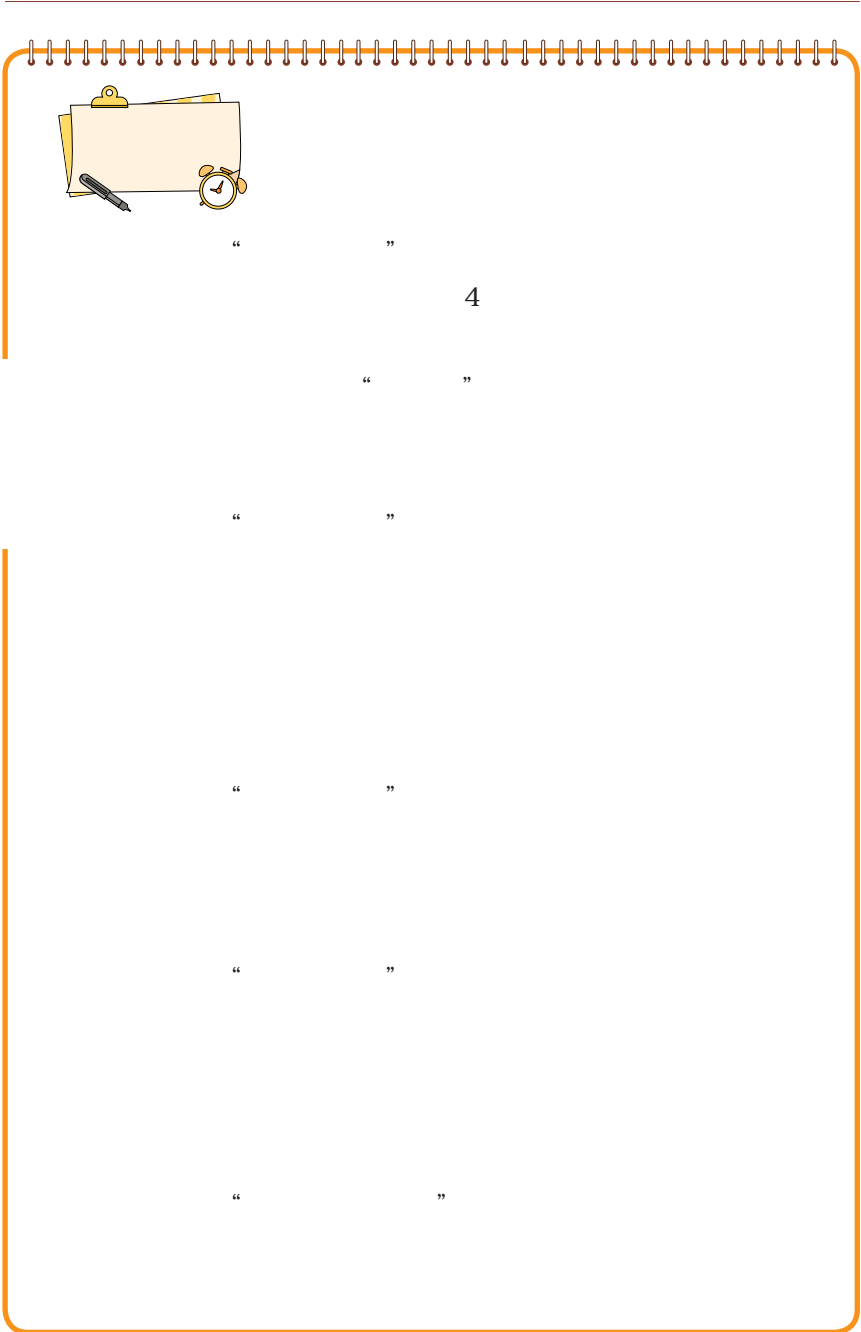
100%

“ ”



“ ”

“ ”





2018 7 6

“ ”

2018 8 21

“

”

“

”

“

”

“

”

“

”

“

”

“

”

“

”